

Renaissance

Issue 26
April 2025



TEASERS EDITION

Mr Yong Yih Ming
Chief Operating Officer, IHH Healthcare Singapore
Chief Executive Officer, Mount Elizabeth Hospital

Dear Colleagues

As we enter the second half of 2025, we are excited to reveal several shared assets.

In this edition, I will provide some teaser images of the assets to be unveiled very soon:

- (1) Hospital Grand Lobby
- (2) Hospital Skylight Atrium
- (3) Medical Centre Drop-Off Point
- (4) Lookback at Key Assets



Mr Yong Yih Ming
Chief Operating Officer, IHH Healthcare Singapore
Chief Executive Officer, Mount Elizabeth Hospital

Project Renaissance Newsletter

TABLE OF CONTENTS

Introduction
• P.1

Grand Lobby
• P.2

Skylight Atrium
• P.3

MEMC Drop-off
• P.4

Lookback
• P.5

HOSPITAL GRAND LOBBY

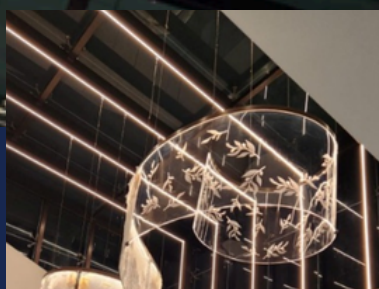
Invitation

We invite everyone to join us for the Operational Launch of our new Grand Lobby on **Monday, 26 May 2025 at 5pm.**

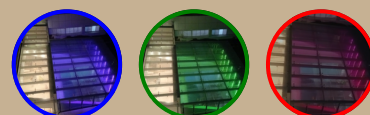
During this event, we will reveal our stunning new lobby, showcase the innovative atrium skylight feature and unique digital art piece.

Join Us

Stay Tuned for more details to come...



HOSPITAL SKYLIGHT ATRIUM



The hospital atrium will be operationally launched on 26 May 2025 together with the Grand Lobby. It has been entirely revamped into a cubic glass structure enhancing more natural light and increasing the floor-to-ceiling height in both the Grand Lobby and car drop-off area. Additionally, it features innovative lighting elements that provide our hospital with a serene and radiant atmosphere, perfect for healing and recovery.



Coming Up....

The medical centre drop-off point will be operationally launched in May 2025 and it will be fully integrated with the new sheltered walkway to Lucky Plaza.

Level 1 Mount Elizabeth Medical Centre

MEDICAL CENTRE DROP-OFF POINT

01 May 2025



LOOKBACK OF KEY ASSETS

We will also use this edition to look back at some of our key assets that have been unveiled since 2023



**Wards 4B, 5A, 5A(HDU),
5B, 7C, 8C, 9C, 10C**



LizWorld
in Wards 4B, 5A, 5A(HDU), 5B,
7C, 8C, 9C, 10C
Endoscopy Rooms



VIP Room – Magnolia Suite



Delivery Suite



Intensive Care Unit (ICU2)



**Neonatal Intensive Care
Unit (NICU)**



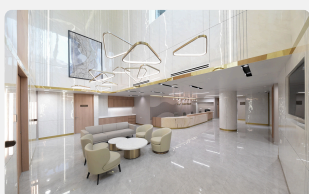
Endoscopy Centre



Angiography Suite



Clinical Laboratory



**Ambulatory Care Centre
@Heeren**



**Rehabilitation Robotics
Centre**



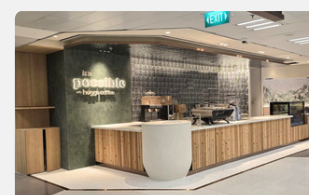
**Executive Health
Screeners**



**MEH Corporate Office
@Tong Building**



**Staff Cafeteria –
Lepak Corner**



Cafe – Huggs Coffee