

Renaissance

Issue 32
October 2025



OUR NEW PATHS, SCANS & GREENS


Mr Yong Yih Ming
Chief Operating Officer, IHH Healthcare Singapore
Chief Executive Officer, Mount Elizabeth Hospital

Dear Colleagues

Project Renaissance has amalgamated and relocated services in Mount Elizabeth Hospital (MEH) so that they can better serve our patients and provide a more integrated and productive care environment for our doctors and staff. In addition, the reconfiguration has resulted in “100m corridors” on every floor to facilitate patient and staff movements efficiently.

In this edition, I will provide an overview of our new “100m corridors” and updates on 3 key assets that have benefitted from the major reconfiguration plans, and the return of one of our gardens:

1. Our “100m Corridors”
2. Radiology Complex
3. Radiation Oncology Centre
4. Nuclear Medicine Centre
5. Heritage Garden



Mr Yong Yih Ming
Chief Operating Officer, IHH Healthcare Singapore
Chief Executive Officer, Mount Elizabeth Hospital

Project Renaissance Newsletter

TABLE OF CONTENTS

Introduction
• P.1

Corridors
• P.2

Radiology
• P.3–4

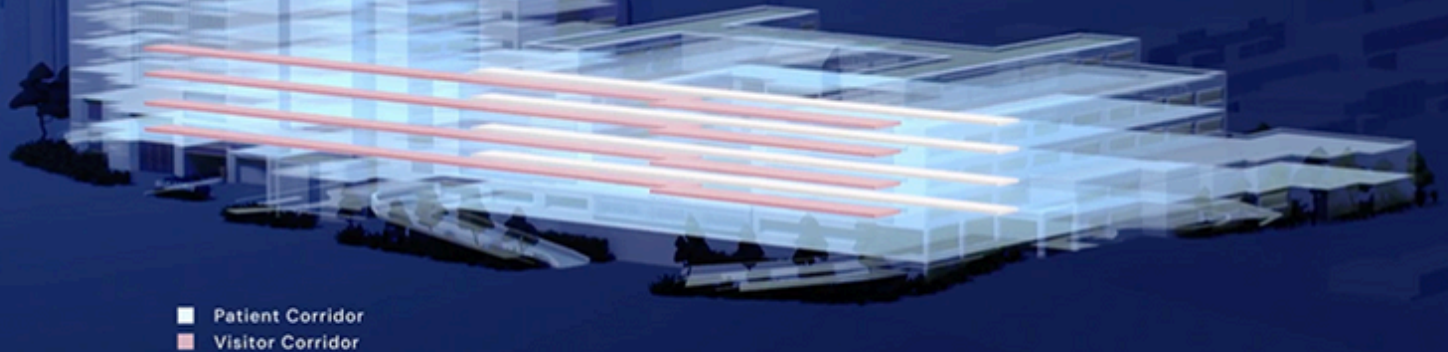
Radiation Oncology
• P.5

Nuclear Medicine
• P.6

Heritage Garden
• P.7–10

New Dedicated Patient, Staff and Public Circulation

Separate corridors and lifts to improve privacy, boost interdependencies and enhance experiences for all.



"100m Corridors"

One of the objectives of Project Renaissance was to create "clean and dirty" corridors to streamline circulation while maintaining dignity of our patients by using service corridors for transfer. Relative to this, we strategically position ancillary services like Radiology, Radiation Oncology, Nuclear Medicine, Pharmacy, Laboratory, Rehabilitation and Urgent Care Centre along these corridors.

This arrangement facilitates efficient patient movement in a logical and integrated manner. We now have nine "100m Corridors" across various levels in MEH following the renovations

At Level

1

2

3

4

5

Our Level 2 now has 3 "100m Corridors" – One vehicular road, One public corridor, and One service corridor. These parallel corridors connect all the public and service lifts to all the clinical and ancillary assets throughout the hospital.



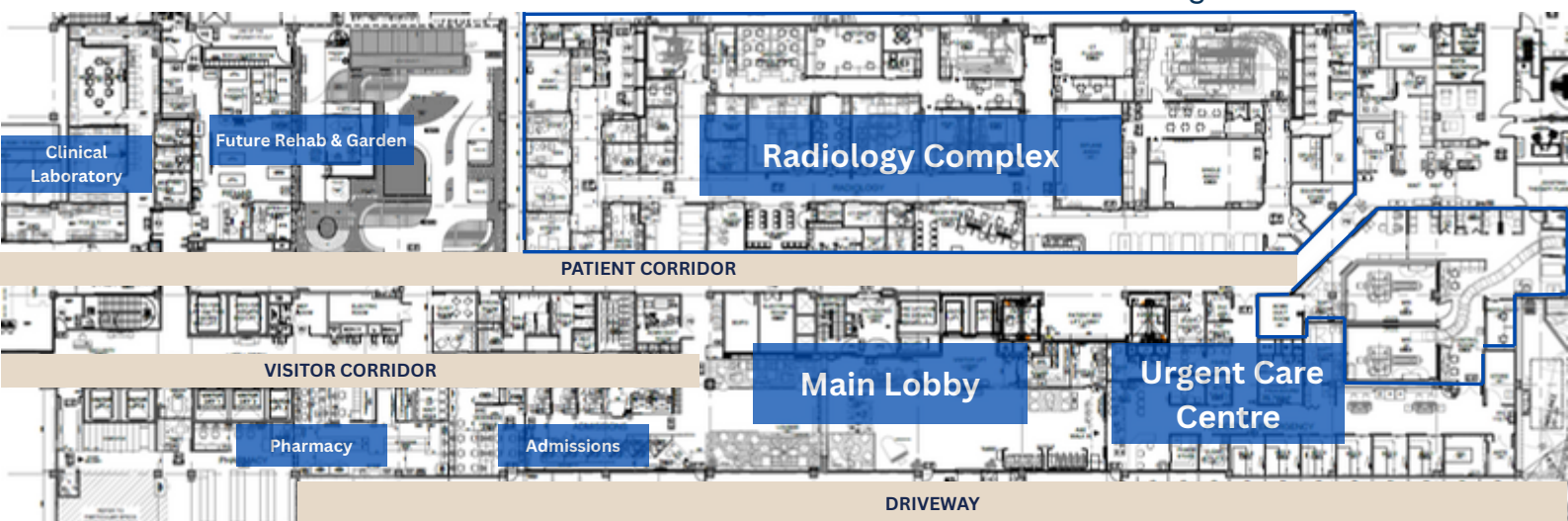
Driveway



Patient Corridor
& Transfer



Visitor
Corridor



RADIOLOGY COMPLEX

MOUNT ELIZABETH HOSPITAL

LEVEL 2



Canon CT Insight



Control Room



Control Room



Nurse Counter



Observation Bay



Registration



Patient transfer corridor

The new Radiology Complex amalgamates at least 5 different radiology units in the past into one single mega footprint. The entire footprint is now 16,778sf and is est20% bigger. Over 10% of Project Renaissance's budget has gone into the building and equipping of our new complex.

Beyond the usual diagnostic equipment like X-rays and ultrasounds, the Centre boasts many state-of-the-art equipment.

RADIOLOGY COMPLEX CAPABILITIES

MOUNT ELIZABETH HOSPITAL



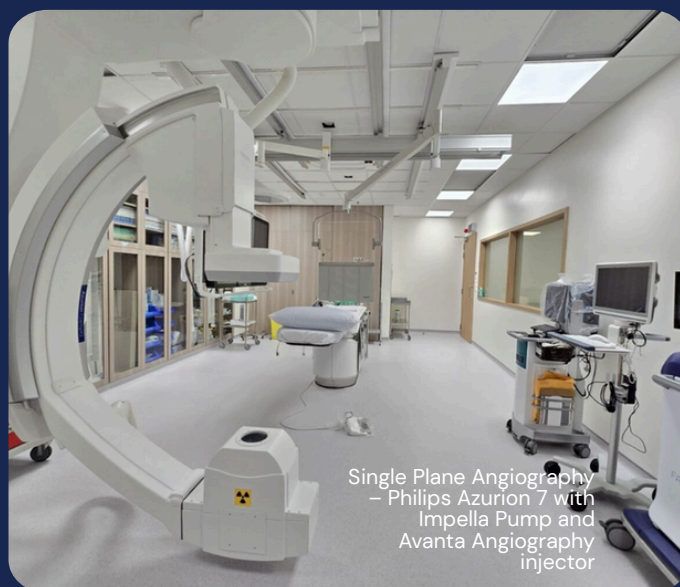
Angiography CT system
– Canon Alphenix 4DOT
(with High Definition
detector)



Canon Aquilion ONE
INSIGHT Edition 640
slice with fluoroscopy



NAEOTOM Alpha-
photon-counting CT
scanner.
Offers Ultra-low dose
CT Lung Screen



Single Plane Angiography
– Philips Azurion 7 with
Impella Pump and
Avanta Angiography
injector



Biplane Angiography System
with EchoNavigator and CereNav
(EP system with adjunct
system Pulsed Field Ablation
(PFA) and to perform
PASCAL/Structural Heart).



Canon Ultimix-i
For Fluoroscopy
and Interventional
procedure

Radiation Oncology

Level 2

Mount Elizabeth Hospital



Tomotherapy Radixact

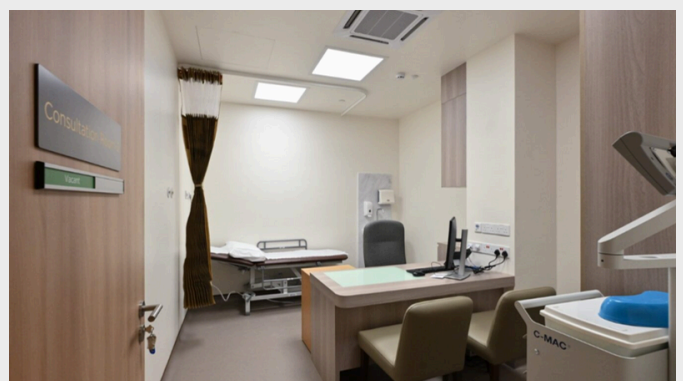


Waiting Areas

The centre has undergone rejuvenation, enhancing both its waiting and consultation areas. Part of its original space will be incorporated into the upcoming Urgent Care Centre (UCC).



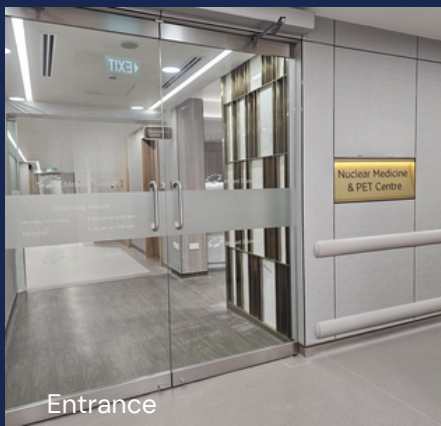
Entrance



Consultation Room

NUCLEAR MEDICINE

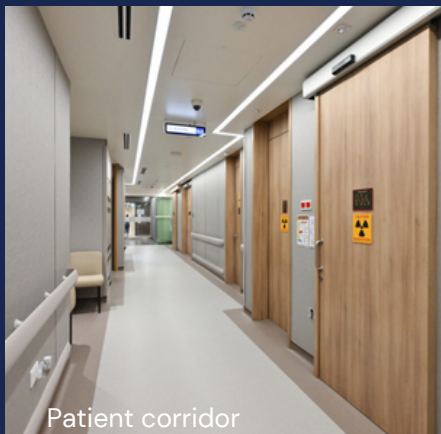
The new Nuclear Medicine Centre was re-located and reconfigured at Level 1 to accommodate the new MEH Carpark Lobby and staff corridor. It was opened in phases and is now fully serving patients together with the two new Radionuclide Therapy single rooms at ward 5C.



Entrance



SPECT CT



Patient corridor

Radionuclide Therapy rooms in Ward 5C



Hot Laboratory





Level 4

MOUNT ELIZABETH HOSPITAL

Heritage Garden

Our garden at Level 4 was officially re-opened as our Heritage Garden on 22 October 2025 via a major tree planting event in conjunction with World Sustainability Day on 29 October 2025 this year. We involved all stakeholders from the Medical Advisory Boards, Specialty Interest Groups, MCST Council, PLife REIT and all categories of staff members to plant 15 trees which would form a key feature of our rejuvenated garden.



22 October 2025

TREE PLANTING CEREMONY



Group Pictures



Group Pictures





22 October 2025

Mount Elizabeth Hospital TREE PLANTING



**Paediatric Medicine & Paediatric Surgery
Obstetrics and Gynaecology**



**Internal Medicine, Psychiatry,
Ophthalmology**



Otorhinolaryngology, Dentistry



Gastroenterology



**Orthopaedic & Hand Surgery,
Neurology & Neurosurgery**



**General Surgery, Plastic Surgery,
Anaesthesiology**



**Renal Medicine & Urology,
Stem cell Transplant,
Living Donor Solid Organ Transplant**



**Cardiology & Cardiothoracic Surgery
rep**



22 October 2025

Mount Elizabeth Hospital TREE PLANTING

MAB Chairman & General Members



ParkwayLife REIT



MCST



MEH Senior Management and Administration



MEH Senior Nursing Leaders



MEH Support Operations



MEH Allied Health

