

Renaissance

Issue 33
November 2025



NATIONAL RECOGNITIONS, NEW LIFTS, ENERGY & GREENS

Mr Yong Yih Ming
Chief Operating Officer, IHH Healthcare Singapore
Chief Executive Officer, Mount Elizabeth Hospital

Dear Colleagues

I am truly honored to announce that Mount Elizabeth Hospital (MEH) has received two significant national recognitions that we can all be proud of due to Project Renaissance.

On 6 November 2025, the MEH team and our new Endoscopy Centre received the Healthcare Humanity Team Award from President Tharman Shanmugaratnam for the Centre's operational design, team organisation and clinical capabilities all aimed at providing safer and improved patient care. Additionally, the Building & Construction Authority (BCA) has awarded MEH the provisional Green Mark Platinum. This recognition is for our design initiatives that meet strict energy efficiency standards while enhancing the physiological, psychological, and sociological well-being of our workforce community. Operationally, we have also unveiled our new Urgent Care Centre (UCC) and final three lifts.

In this edition, I will provide updates as follows:

- (a) Healthcare Humanity Award
- (b) Provisional Green Mark Platinum Award
- (c) New Urgent Care Centre
- (d) New Lifts & Final Configuration of Lifts
- (e) New Solar Panels
- (f) New Mechanical & Electrical Installations
- (g) Biophilic & Greener Environment
- (h) Radiology Complex Open House



Mr Yong Yih Ming
Chief Operating Officer, IHH Healthcare Singapore
Chief Executive Officer, Mount Elizabeth Hospital

Project Renaissance Newsletter

TABLE OF CONTENTS

Introduction
• P.1

Healthcare Humanity Award
• P.2

Green Mark Platinum
Award
• P.3

24-Hour Urgent Care Centre
• P.4-5

Lifts
• P.6

Solar Panels
• P.7

M&E
• P.8

Green Environment
• P.9

Radiology Complex
• P.10

HEALTHCARE HUMANITY AWARDS (HHA) 2025



HHA 2025, Team Collaboration: IHH Endoscopy Project Renaissance

One of the objectives of Project Renaissance was to redesign, rationalize and right-site clinical spaces so that we can better serve our patients, support our doctors and staff, and provide a sustainable operational environment for many years to come.

The team comprising the Nursing and Operations members and Gastroenterologists went through multiple iterations, conceptualisation and even robust debates all with a common goal for a safer and comfortable patient care environment with enhanced clinical capabilities and operational efficiencies.

We are proud that our new Endoscopy Centre has been recognised for these attributes and has received the Healthcare Humanity Team Award by President Tharman Shanmugaratnam on 6 November 2025.



HHA 2025, Individual Award for Compassion: Assistant Nurse Clinician, Soe Myint

Soe Myint, MEH's ANC received the individual Healthcare Humanity Award for Compassion, an award which recognise individuals who show extraordinary compassion in their daily interactions with patients and families, making healthcare deeply personal and humane. He has gone above and beyond the call of duty to offer care and comfort to those in need.



Provisional **GREEN MARK PLATINUM AWARD**



Another objective of Project Renaissance was to redesign and provide for an institution that is energy efficient, incorporates various design and infrastructure features that support employees' physiological, psychological and sociological well-being for a sustainable care and operational environment.

We overhauled the M&E of the hospital, redistributed the energy load and redesigned spaces as part of the project. To achieve this recognition, MEH needed to fulfil stringent and complex requirements. We thank the team comprising our Operations, Facility Management, CRES, ParkwayLife REIT and consultants for making this milestone possible for the MEH community.



- ✓ Energy Efficiency
- ✓ Medical Equipment Efficiency
- ✓ Water Efficiency
- ✓ Indoor Environmental Quality
- ✓ Sustainable Construction & Materials
- ✓ Waste Management
- ✓ Renewable energy systems
- ✓ Sustainability practices
- ✓ Smart Building Systems
- ✓ Greenery & Biodiversity

24-HOUR URGENT CARE CENTRE

MOUNT ELIZABETH HOSPITAL

Level 2
Entrance from Grand Lobby

Our new UCC was unveiled on 1 December 2025, almost 3 years since it started operating at the temporary site. The new UCC is fully reconfigured for better care segmentation, workflows and integration with radiology and the inpatient wards via the new “100m corridors” and patient lifts.



Entrance Via Grand Lobby



Registration



Observation Bay & Nurse Counter



Triage Room



Patient transfer Via 100m corridor



Procedure & Resus Room



Isolation Room

01 December 2025



OFFICIAL OPENING CEREMONY

24-HOUR URGENT CARE CENTRE



Ribbon Cutting



Opening Addresses



Group Pictures



Blessing of the new area



01 December 2025

OFFICIAL OPENING LIFT LOBBY B

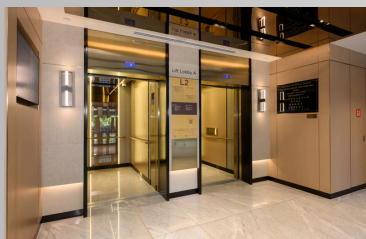
Our final three public lifts were operationalised on 5 November 2025 and symbolically unveiled on 1 December 2025. These lifts complete the suite of 26 lifts at both the Hospital and Medical Centre. We have added 4 lifts to the total configuration with Project Renaissance with all the lifts in the hospital totally new and re-located for better circulation and to support our public and service corridor flows.



Ribbon Cutting



Group pictures



Visitor Lift Lobby A



Visitor Lift Lobby B



Visitor Lift Lobby C



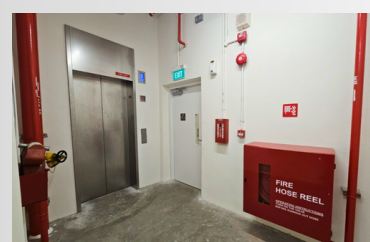
Patient Lift Lobby A



Patient Lift Lobby B



Service Lift Lobby A



Service Lift Lobby B



Visitor . Patient . Service



A total of 381 Solar Panels

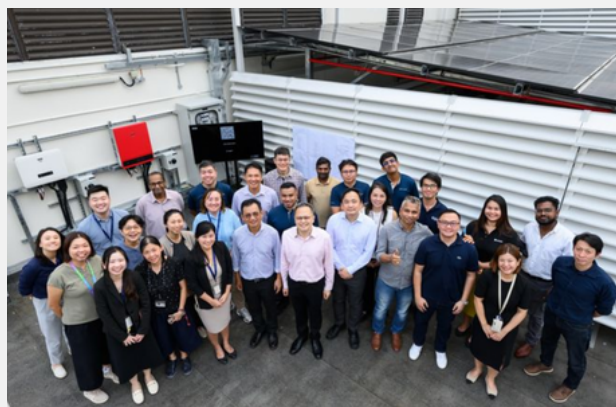
SOLAR PANELS

Through Project Renaissance, we have introduced new solar panels to complement our existing energy supply method for the hospital. Positioned on our rooftops above Wards 5A, 5B and 10C, these solar panels will produce sufficient

renewable energy to power our public and common areas within the hospital. This initiative represents a significant step toward creating a more sustainable care environment, while also contributing to the well-being of our planet.



Unveiling event



Group pictures on RoofTop

MECHANICAL & ELECTRICAL

We have also overhauled and/or replaced the other M&E provisions like our chillers, chiller pipe, fire protection system, medical gas system and integrating building management into a new Building Management Centre. These provisions will add further efficiencies to our energy, water and carbon footprints while we continue to care for our patients daily



Meet the Facility Management, Technician & Engineer Team



Chiller System



Fire Protection System



Generator



Medical Gas Compressor



Cooling Tower



Switch Room

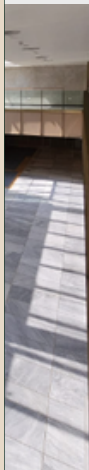


Uninterruptible Power Supply (UPS)

Biophilic & Greener Environment



In addition to the M&E installations, Project Renaissance also added more green features and incorporated biophilic features to connect our patients, staff, doctors and caregivers to natural elements like sunlight, plants and more natural elements. We have expanded and heightened our Grand Lobby to bring in more natural light into our shared common space. We have also incorporated garden views and more viewing corridors into our overall design concepts. We have added more green walls and plants into our common spaces too. All these aims to enhance the overall well-being of our entire MEH community.



RADIOLOGY COMPLEX

MOUNT ELIZABETH HOSPITAL

LEVEL 2



12 November 2025

In the last edition, we updated on the new clinical capabilities in our new Radiology Complex that is an amalgamation of five different radiology units prior to Project Renaissance.

An open house was organised to introduce these new clinical capabilities to our doctors on 12 November 2025 and to officially unveil the new asset.

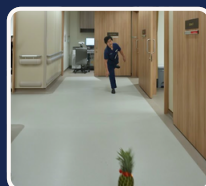


Opening Addresses by

Mr Yong Yih Ming
(COO, IHH SG & CEO, MEH)
Ms Tan Yujuan
(CEO, Parkway Radiology & MediCentre)
Dr Eugene Liu
(Medical Director, MEH Radiology)



Ribbon Cutting



Pineapple Rolling by Team Radiology



Group Pictures